



Why Paragard May Be Right for Her

Paragard is the birth control that's:



100%
Hormone
Free



Over
99%
Effective



1 Simple Active
Ingredient –
Copper



No hassle or daily birth control routine – just a monthly thread check



Lasts up to 10 years but can be removed at any time if she decides she wants to get pregnant*



Non-surgical placement during a routine office visit



The only IUD FDA approved for over 30 years



Most women with insurance can get Paragard at no cost*

*Must be removed by a healthcare provider.

*Check with your insurance provider to confirm coverage related to your individual plan. Fees for the Paragard placement procedure may apply.



©2021 CooperSurgical, Inc.
Paragard is a registered trademark of CooperSurgical, Inc.
September 2022 C-US-PAR-000254

Loading and Placement Procedure (Cont.)

2. Adjusting the blue flange

- Once the prior steps are completed and Paragard is in the insertion tube, grasp the insertion tube at the open end of the package and using the ruler on the sterile card, adjust the blue flange so that the distance from the top of the loaded Paragard to the top of the blue flange is the same as the uterine depth measured with the uterine sound.
- Rotate the blue flange so that the horizontal arms of Paragard and the long axis of the blue flange lie in the same horizontal plane to ensure the arms open up in the proper direction.

3. Placing in uterus

- To orient the uterus in an axial position, apply gentle traction to the tenaculum.
- Then pass the loaded insertion tube through the cervical canal until Paragard just touches the fundus of the uterus.
- The blue flange should be at the cervix in the horizontal plane (see Figure 5).

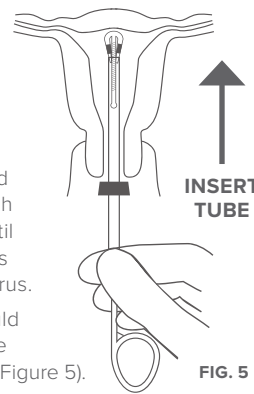


FIG. 5

4. Releasing the arms

- Release the arms of Paragard by holding the solid white rod steady and withdrawing the insertion tube no more than one centimeter.
- This releases the arms of Paragard high in the uterine fundus (see Figure 6).

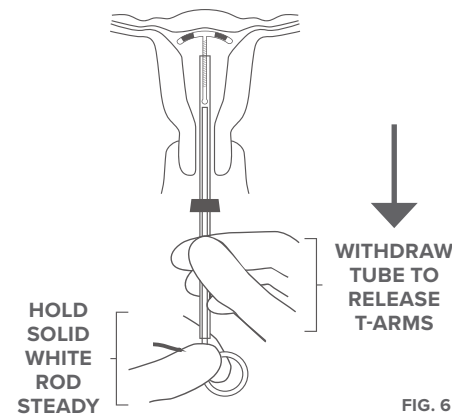


FIG. 6

5. Ensure high fundal placement

- Gently and carefully move the insertion tube upward toward the fundus of the uterus, until slight resistance is felt. This will ensure placement of Paragard at the highest possible position within the uterus (see Figure 7).
- Do not use the white rod as a plunger to push or insert Paragard.**

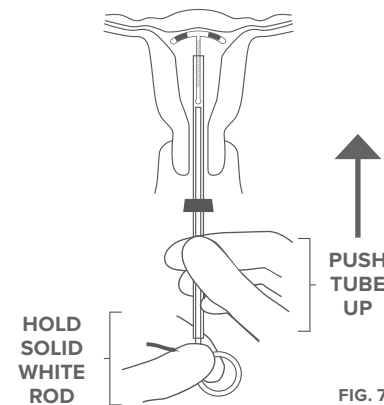


FIG. 7

6. Withdraw solid white rod and insertion tube

- Hold the insertion tube steady and withdraw the solid white rod (see Figure 8).
- Do not remove the solid white rod and the insertion tube at the same time to prevent accidental pulling of the threads.**
- Gently and slowly withdraw the insertion tube from the cervical canal.

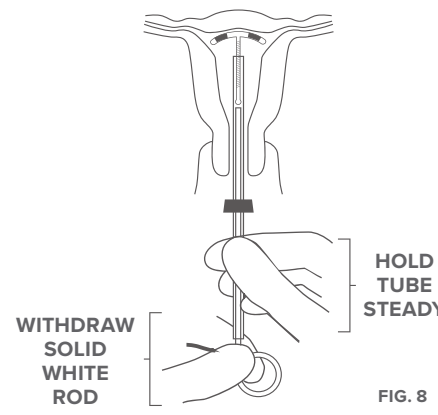


FIG. 8

7. Trimming the threads

- Only the threads should be visible protruding from the cervix (see Figure 9).
- Trim the threads so that 3 to 4 cm protrude into the vagina. Measure the length of protrusion of the threads.
- Record the length of threads, date of placement and Paragard lot number in the patients chart.

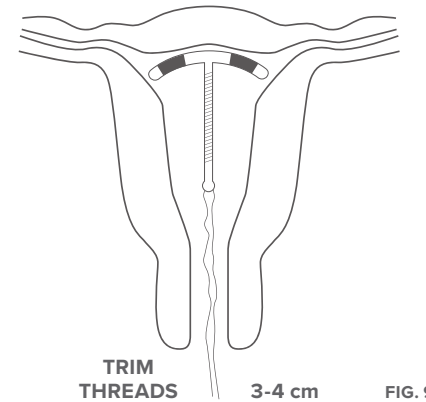


FIG. 9

Suspicion of Improper Placement

- If you suspect that Paragard is not in the correct position, check placement (with ultrasound, if necessary).
- If Paragard is not positioned completely within the uterus, remove it and replace it with a new Paragard.
- Do not reinsert an expelled or partially expelled Paragard.**

Postplacement Management of Paragard

Following placement:

- Examine the patient after her first menses to confirm that Paragard is still in place. You should be able to see or feel only the threads. The length of the visible threads may change with time. However, no action is needed unless you suspect partial expulsion, perforation, pregnancy, or breakage.
- If you cannot find the threads in the vagina, check that Paragard is still in the uterus. The threads can retract into the uterus or break, or Paragard can break, perforate the uterus, or be expelled. Gentle probing of the cavity, x-ray, or sonography may be required to locate Paragard.
- Remove Paragard if it has been partially expelled or perforated the uterus.
- Do not reinsert a used Paragard.**

Removal

Timing of removal:

- Paragard must be removed no later than 10 years after placement, but may be removed at anytime prior.
- A new Paragard can be placed at the time of removal if continued contraceptive protection is desired.

Removal instructions:

- Use a speculum and visualize the cervix.
- Remove Paragard with forceps, pulling gently on the exposed threads. The arms of Paragard will fold upwards as it is withdrawn from the uterus.
- Breakage or embedment of Paragard in the myometrium can make removal difficult. Analgesia, paracervical anesthesia, cervical dilation, alligator forceps or other grasping instrument, or hysteroscopy may assist in removing an embedded Paragard.
- Make sure Paragard is intact upon removal.
- Removal may be associated with some pain and/or bleeding or vasovagal reactions (e.g. syncope, bradycardia, seizures) especially in patients with a predisposition to these conditions.



Placement Training Guide

Step-by-step instructional guide for preparation, loading, placement and removal of Paragard.



For more information scan the QR code, visit ParagardTraining.com or call 1-877-PARAGARD (727-2427)

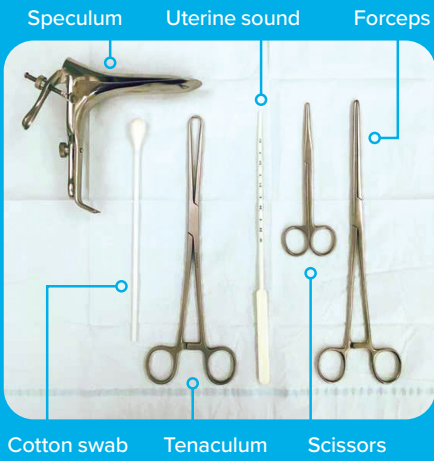
Please see Important Safety Information and accompanying full Prescribing Information.

References.

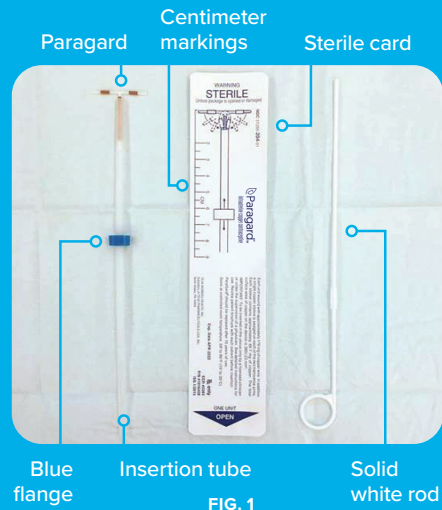
Paragard® T380A [Prescribing Information]. Trumbull, CT: CooperSurgical, Inc.; July 2021.



Placement and Removal Tools



Paragard Intrauterine System (IUS) with Insertion Tube and Solid White Rod



INDICATIONS AND USAGE

Paragard is a copper-containing intrauterine system (IUS) indicated for prevention of pregnancy in females of reproductive potential for up to 10 years.

IMPORTANT SAFETY INFORMATION CONTRAINDICATIONS

The use of Paragard is contraindicated when one or more of the following conditions exist:

- Pregnancy or suspicion of pregnancy, abnormalities of the uterus resulting in distortion of the uterine cavity, acute pelvic inflammatory disease (PID), postpartum or postabortal endometritis in the past 3 months, known or suspected uterine or cervical malignancy, uterine bleeding of unknown etiology, untreated acute cervicitis or vaginitis or other lower genital tract infection, conditions associated with increased susceptibility to pelvic infections, Wilson's disease, a previously placed IUS that has not been removed, hypersensitivity to any component of Paragard including to copper or any of the trace elements present in the copper component of Paragard.

WARNINGS AND PRECAUTIONS

The use of Paragard is contraindicated when one or more of the following conditions exist:

Ectopic Pregnancy: Evaluate for possible ectopic pregnancy in any female who becomes pregnant while using Paragard.

Intrauterine Pregnancy: Failure to remove Paragard increases the risk of miscarriage, sepsis, premature labor, and premature delivery.

Sepsis: Severe infection or sepsis, including Group A Streptococcal Sepsis (GAS), have been reported following insertion of IUSs, including Paragard.

Pelvic Inflammatory Disease and Endometritis: Remove Paragard in cases of recurrent PID or endometritis, or if an acute pelvic infection is severe or does not respond to treatment.

Embedment: Partial penetration or embedment of Paragard in the myometrium can make removal difficult; surgical removal may be necessary. Breakage of an embedded Paragard during non-surgical removal has been reported.

Perforation: Partial or total perforation of the uterine wall or cervix may reduce contraceptive efficacy and result in pregnancy. Delayed detection or removal of Paragard may result in migration outside the uterine cavity, adhesions, peritonitis, intestinal penetration, intestinal obstruction, abscesses and/or damage to adjacent organs. Increased risk when the uterus is fixed, retroverted or not completely involuted during the postpartum period. If perforation does occur, locate and remove Paragard promptly.

Expulsion: Partial or complete expulsion of Paragard has been reported, resulting in the loss of contraceptive protection. The risk of expulsion may be increased when the uterus is not completely involuted at the time of insertion. Remove a partially expelled Paragard.

Wilson's Disease: Paragard may exacerbate Wilson's disease.

Bleeding Pattern Alterations: Paragard can alter the bleeding pattern and result in heavier and longer menstrual cycles with intermenstrual spotting.

Magnetic Resonance Imaging (MRI) Safety Information: Non-clinical testing has demonstrated that Paragard is MR Conditional.

Medical Diathermy: Avoid using high medical RF transmitter devices in females with Paragard.

ADVERSE REACTIONS

Adverse reactions reported in clinical trials include anemia, backache, dysmenorrhea, dyspareunia, expulsion (complete or partial), prolonged menstrual flow, menstrual spotting, pain and cramping, and vaginitis.

Dosage and Administration Instructions

- Paragard should only be placed by healthcare providers trained in Paragard placement procedure.
- Place one Paragard at the fundus of the uterine cavity.
- Remove Paragard on or before 10 years from the date of placement.
- May replace Paragard at the time of removal with a new Paragard if continued contraceptive protection is desired.
- Before considering use of Paragard, make sure that the female is an appropriate candidate for Paragard and exclude pregnancy prior to use.

Timing of Placement

Clinical Situation	Recommended Timing of Paragard Placement
1. Start Paragard in females not currently using contraception.	At any time during the menstrual cycle.
2. Switch to Paragard from an oral, transdermal, or vaginal form of hormonal contraception or an injectable progestin contraceptive.	At any time during the menstrual cycle; discontinue the previous method.
3. Switch to Paragard from a contraceptive implant or other intrauterine system.	Same day the implant or IUS is removed (place Paragard at any time during the menstrual cycle).
4. Paragard placement after abortion or miscarriage.	Immediately after abortion, although immediate placement has a slightly higher risk of expulsion than placement at other times. Placement after second trimester abortion is associated with a higher risk of expulsion than placement after a first trimester abortion.
5. Paragard placement after childbirth.	May place immediately postpartum. Placement before uterine involution is complete, which may not occur until the second postpartum month, has been associated with increased risk of expulsion. There appears to be an increased risk of perforation in lactating women.

Preparation

Before placement:

- Use strict aseptic techniques throughout preparation.
- Prepare placement tools (e.g., speculum, cotton swab, tenaculum, uterine sound, scissors, and forceps).
- Consider use of an analgesic.
- Establish the size and position of the uterus by performing a bi-manual examination.
- Insert a speculum and, using a cotton swab, cleanse the cervix and vagina with an antiseptic solution.
- Apply a tenaculum to the cervix and use gentle traction to align the cervical canal with the uterine cavity.
- Gently insert a sterile uterine sound to measure the depth of the uterine cavity. The uterus should sound to a depth of 6 to 9 cm except when placing Paragard immediately postabortion or immediately postpartum.
 - Placement of Paragard may be associated with pain and/or bleeding or vasovagal reactions (e.g. syncope, bradycardia, or seizure) especially in patients with a predisposition to these symptoms. Placement into a uterine cavity measuring less than 6 cm may increase the incidence of expulsion, bleeding, pain, and perforation.
 - If cervical stenosis is encountered, avoid undue force. Dilators and analgesia/local anesthesia may be helpful in this situation.

Loading and Placement Procedure

1. Option A: Loading outside of the package

- Use strict aseptic techniques throughout the placement procedure.
- Place the package containing Paragard (face-up), sterile card, and solid white rod on a sterile field (see Figure 1) and open package from the bottom end where arrow says "open".
- Using sterile gloves, bend the T-Arms of Paragard by folding the two horizontal arms down against the stem.
- Slightly withdraw insertion tube, push arms down along the stem, slide insertion tube over the tips of the T-Arms (see Figure 2). Only the tips of the T-Arms should be in the insertion tube. Do not advance beyond the copper collars.
- Insert solid white rod into bottom of insertion tube until it touches the bottom of the Paragard.
- **Do not leave the horizontal arms of Paragard bent for more than 5 minutes, as the arms may not open properly.**

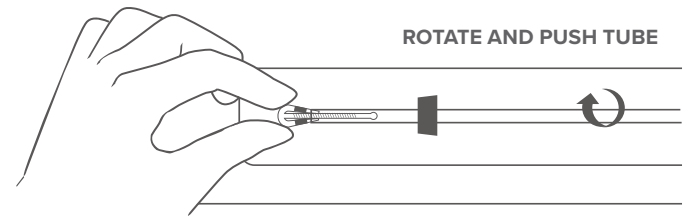


FIG. 2

1. Option B: Loading inside the package

- In situations where sterile gloves are not available, you can load Paragard in the sterile package.
- Place the package face up on a clean surface. Open from the bottom end where arrow says "open".
- Pull the solid white rod from the package and put it back in the package laying it carefully alongside the insertion tube, making sure the distal end of the rod remains sterile.
- Place thumb and index finger on the outside of the package, on top of the ends of the horizontal arms. Use other hand to push insertion tube against arms of Paragard and bend the T-Arms downward (see Figure 3).

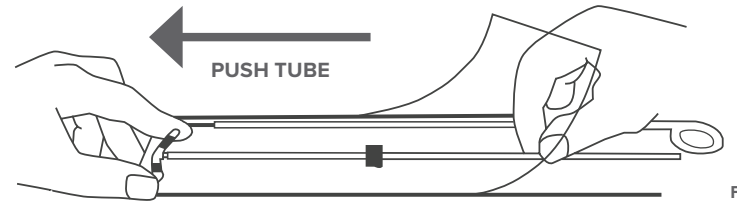


FIG. 3

- Bring the thumb and index finger closer together on the outside of the package to continue bending the arms until they are alongside the stem.
- Use the other hand to withdraw the insertion tube slightly so that the insertion tube can be pushed and rotated over the tips of the T-Arms (see Figure 4).
- Only the tips of the T-Arms should be in the insertion tube. Do not advance beyond the copper collars. Insert solid white rod into bottom of the insertion tube until it touches the bottom of the IUS.
- **Do not leave the horizontal arms of Paragard bent for more than 5 minutes, as the arms may not open properly.**

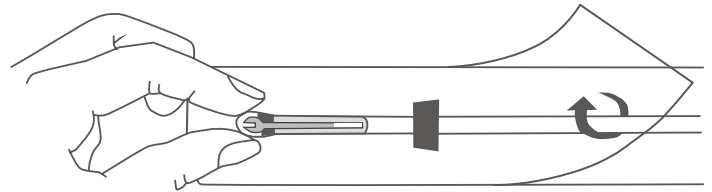


FIG. 4



HIGHLIGHTS OF PRESCRIBING INFORMATION

These highlights do not include all the information needed to use PARAGARD® safely and effectively. See full prescribing information for PARAGARD.

Paragard® (intrauterine copper contraceptive)

Initial U.S. Approval: 1984

INDICATIONS AND USAGE

Paragard is a copper-containing intrauterine system (IUS) indicated for prevention of pregnancy in females of reproductive potential for up to 10 years. (1)

DOSAGE AND ADMINISTRATION

- Insert a single Paragard at the fundus of the uterine cavity. Remove Paragard no later than 10 years from the date of insertion. (2.1)
- Insert and remove Paragard only if you are a healthcare provider trained on these procedures. (2.1)
- See the Full Prescribing Information for recommended timing of insertion preparation instructions, insertion procedures, postplacement management, and instructions on removing Paragard (2.2, 2.3, 2.4, 2.5, 2.6)
- Following the insertion, examine the patient after her first menses to confirm Paragard is still in place. (2.5)

DOSAGE FORMS AND STRENGTHS

One sterile, T-frame IUS containing copper consisting of a T-shaped polyethylene frame with a total exposed copper surface area of $380 \pm 23 \text{ mm}^2$, (approximately 176 mg of wire wrapped around the vertical stem and an approximately 68.7 mg collar placed on each side of the horizontal arm) packaged together with an insertion tube with blue flange and solid white rod. (3, 16)

CONTRAINDICATIONS

- Pregnancy or suspicion of pregnancy (4)
- Abnormalities of the uterus resulting in distortion of the uterine cavity (4)
- Acute pelvic inflammatory disease (PID) (4)
- Postpartum endometritis or postabortal endometritis in past 3 months (4)
- Known or suspected uterine or cervical malignancy (4)

- Uterine bleeding of unknown etiology (4)
- Untreated acute cervicitis or vaginitis or other lower genital tract infection (4)
- Conditions associated with increased susceptibility to pelvic infections (4)
- Wilson's disease (4)
- A previously placed IUD or IUS that has not been removed (4)
- Hypersensitivity to any component of Paragard including copper or any trace elements present in the copper components of Paragard (4)

WARNINGS AND PRECAUTIONS

- **Ectopic Pregnancy:** Promptly evaluate women who become pregnant for ectopic pregnancy while using Paragard. (5.1)
- **Risks with Intrauterine Pregnancy:** Increased risk of spontaneous abortion, septic abortion, premature delivery, sepsis, septic shock and death if pregnancy occurs. Remove Paragard if pregnancy occurs with Paragard in place. (5.2)
- **Sepsis:** Group A streptococcal infection has been reported; strict aseptic technique is essential during insertion (5.3)
- **Pelvic Inflammatory Disease (PID) and Endometritis:** Before using Paragard, consider the risks of PID and endometritis. Promptly assess and treat patients with signs and symptoms of PID. (5.4)
- **Embedment:** Surgical removal may be necessary. (5.5)
- **Perforation:** May reduce contraceptive effectiveness and require surgery. Risk is increased if inserted in lactating women and may be increased if inserted in women with fixed, retroverted uteri or noninvolved uteri. (5.6)
- **Expulsion:** Partial or complete expulsion may occur. Remove a partially expelled Paragard. (5.7)
- **Bleeding patterns:** May be altered and result in heavier and longer bleeding with spotting. (5.9)
- **MRI Safety Information:** Patients using Paragard can be safely scanned with MRI only under certain conditions. (5.10)

ADVERSE REACTIONS

Adverse reactions reported in clinical trials include: anemia, backache, dysmenorrhea, dyspareunia, expulsion (complete or partial), prolonged menstrual flow, menstrual spotting, pain and cramping, and vaginitis. (6.1)

To report SUSPECTED ADVERSE REACTIONS, contact CooperSurgical, Inc. at 1-877-727-2427 or FDA at 1-800-FDA-1088 or www.fda.gov/medwatch.

See 17 for PATIENT COUNSELING INFORMATION and FDA-approved patient labeling.

Revised: 2/2020

FULL PRESCRIBING INFORMATION: CONTENTS*

1 INDICATIONS AND USAGE

2 DOSAGE AND ADMINISTRATION

- 2.1 Important Dosage and Administration Instructions
- 2.2 Timing of Insertion
- 2.3 Preparation Instructions
- 2.4 Insertion Procedure
- 2.5 Postplacement Management of Paragard
- 2.6 Removal of Paragard

3 DOSAGE FORMS AND STRENGTHS

4 CONTRAINDICATIONS

5 WARNINGS AND PRECAUTIONS

- 5.1 Ectopic Pregnancy
- 5.2 Risks with Intrauterine Pregnancy
- 5.3 Sepsis
- 5.4 Pelvic Inflammatory Disease and Endometritis
- 5.5 Embedment
- 5.6 Perforation
- 5.7 Expulsion
- 5.8 Wilson's Disease
- 5.9 Bleeding Pattern Alterations

5.10 Magnetic Resonance Imaging (MRI) Safety Information

5.11 Medical Diathermy

6 ADVERSE REACTIONS

- 6.1 Clinical Trials Experience
- 6.2 Postmarketing Experience

7 DRUG INTERACTIONS

8 USE IN SPECIFIC POPULATIONS

- 8.1 Pregnancy
- 8.2 Lactation
- 8.4 Pediatric Use
- 8.5 Geriatric Use

11 DESCRIPTION

12 CLINICAL PHARMACOLOGY

- 12.1 Mechanism of Action

13 NONCLINICAL TOXICOLOGY

- 13.1 Carcinogenicity, Mutagenicity, Impairment of Fertility

14 CLINICAL STUDIES

16 HOW SUPPLIED/STORAGE AND HANDLING

17 PATIENT COUNSELING INFORMATION

*Sections or subsections omitted from the full prescribing information are not listed.

FULL PRESCRIBING INFORMATION

1 INDICATIONS AND USAGE

Paragard is indicated for prevention of pregnancy in females of reproductive potential for up to 10 years.

2 DOSAGE AND ADMINISTRATION

2.1 Important Dosage and Administration Instructions

- Paragard should only be inserted by a healthcare provider trained in Paragard’s insertion procedures, because insertion for Paragard is different from that used for other intrauterine systems. Healthcare providers should become thoroughly familiar with the product, product educational materials, product insertion instructions, and prescribing information before attempting insertion of Paragard.
- Insert one Paragard at the fundus of the uterine cavity [see Dosage and Administration (2.4)].
- Remove Paragard on or before 10 years from the date of insertion [see Dosage and Administration (2.6)].
- May replace Paragard at the time of removal with a new Paragard if continued contraceptive protection is desired.
- Before considering use of Paragard, make sure that the female is an appropriate candidate for Paragard. Exclude pregnancy (consider the possibility of ovulation and conception) prior to use [see Contraindications (4) and Warnings and Precautions (5.2)].

2.2 Timing of Insertion

Refer to Table 1 for recommended timing of Paragard insertion.

Table 1: Recommended Timing of Paragard Insertion

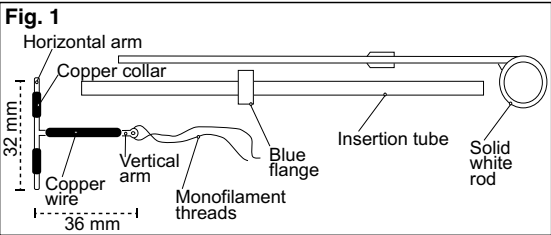
Clinical Situation	Recommended Timing of Paragard Insertion
1. Start Paragard in females not currently using contraception	At any time during the menstrual cycle.
2. Switch to Paragard from an oral, transdermal, or vaginal form of hormonal contraception or an injectable progestin contraceptive	At any time during the menstrual cycle; discontinue the previous method.
3. Switch to Paragard from a contraceptive implant or other intrauterine system	Same day the implant or IUS is removed (insert at any time during the menstrual cycle).
4. Insert Paragard after abortion or miscarriage	Immediately after abortion, although immediate placement has a slightly higher risk of expulsion than placement at other times. Insertion after second trimester abortion is associated with a higher risk of expulsion than insertion after a first trimester abortion.
5. Insert Paragard after Childbirth	May insert immediately postpartum. Insertion before uterine involution is complete, which may not occur until the second postpartum month, has been associated with increased risk of expulsion [see Warnings and Precautions (5.6,5.7)]. There appears to be an increased risk of perforation in lactating women [see Warnings and Precautions (5.6)].

2.3 Preparation Instructions

Before insertion:

- Use strict aseptic techniques throughout preparation [see Warnings and Precautions (5.4)].
- Prepare placement tools (e.g., speculum, cotton swab, tenaculum, uterine sound, scissors, and forceps).
- Place the package containing Paragard (face-up), sterile card, and solid white rod on a sterile field (see Figure 1) and open package from the bottom end where arrow says “open”.

Figure 1: Paragard Intrauterine System (IUS) with Insertion Tube and Solid White Rod



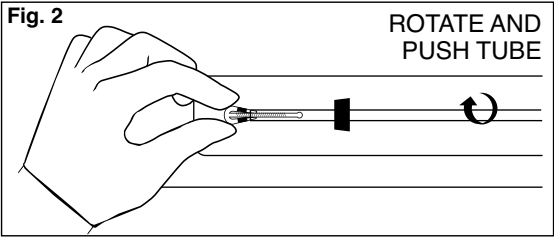
- Consider use of an analgesic.
- Establish the size and position of the uterus by performing a bi-manual examination.
- Insert a speculum and, using a cotton swab, cleanse the cervix and vagina with an antiseptic solution.
- Apply a tenaculum to the cervix and use gentle traction to align the cervical canal with the uterine cavity.

- Gently insert a sterile uterine sound to measure the depth of the uterine cavity. The uterus should sound to a depth of 6 to 9 cm except when inserting Paragard immediately postabortion or immediately postpartum.
- Insertion of Paragard may be associated with pain and/or bleeding or vasovagal reactions (e.g. syncope, bradycardia, or seizure) especially in patients with a predisposition to these symptoms. Insertion into a uterine cavity measuring less than 6 cm may increase the incidence of expulsion, bleeding, pain, and perforation.
- If cervical stenosis is encountered, avoid undue force. Dilators and analgesia/local anesthesia may be helpful in this situation.

2.4 Insertion Procedure

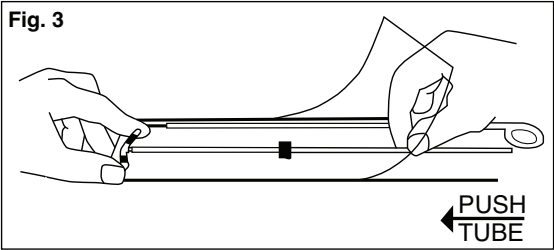
- Use strict aseptic techniques throughout the insertion procedure [see Warnings and Precautions (5.4)]. Using sterile gloves, bend the T-Arms of Paragard by folding the two horizontal arms down against the stem.
- Slightly withdraw insertion tube, push arms down along the stem, slide insertion tube over the tips of the T-Arms (see Figure 2). Only the tips of the T-Arms should be in the insertion tube. Do not advance beyond the copper collars. Insert solid white rod into bottom of insertion tube until it touches the bottom of the IUS. Do not leave the horizontal arms of Paragard bent for more than 5 minutes, as the arms may not open properly.

Figure 2: Inserting Tips of T-Arms of Paragard into Insertion Tube



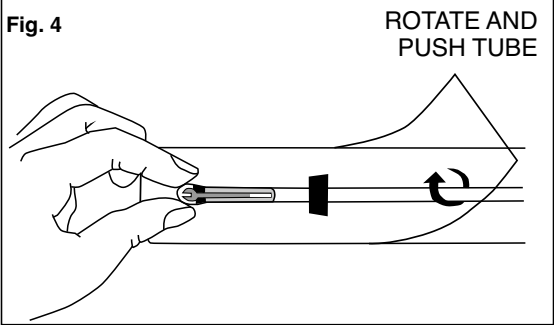
- Although using sterile gloves is recommended, in situations where sterile gloves are not available, you can perform this step while Paragard is in the sterile package. Place the package face up on a clean surface. Open from the bottom end where arrow says “open”. Pull the solid white rod from the package and put it back in the package laying it carefully alongside the insertion tube, making sure the distal end of the rod remains sterile. Place thumb and index finger on the outside of the package, on top of the ends of the horizontal arms. Use other hand to push insertion tube against arms of Paragard (shown by arrow in Figure 3). This will start bending the T-Arms downward. Note that the arms of Paragard should be folded downward to ensure proper insertion.

Figure 3: Bending T-Arms of Paragard While in Sterile Packaging



- Bring the thumb and index finger closer together on the outside of the package to continue bending the arms until they are alongside the stem. Use the other hand to withdraw the insertion tube slightly so that the insertion tube can be pushed and rotated over the tips of the T-Arms (see Figure 4). Only the tips of the T-Arms should be in the insertion tube. Do not advance beyond the copper collars. Insert solid white rod into bottom of the insertion tube until it touches the bottom of the IUS. Do not leave the horizontal arms of Paragard bent for more than 5 minutes, as the arms may not open properly.

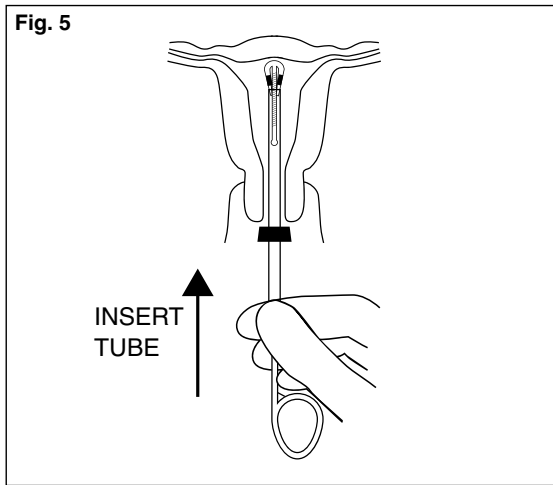
Figure 4: Inserting Tips of T-Arms of Paragard into Insertion Tube While in Sterile Packaging



- Once the above steps are completed and Paragard is in the insertion tube, grasp the insertion tube at the open end of the package; adjust the blue flange so that the distance from the top of the Paragard insertion tube is the same as the uterine depth measured with the uterine sound or use the sterile card to adjust the blue flange according to the premeasured uterine depth.

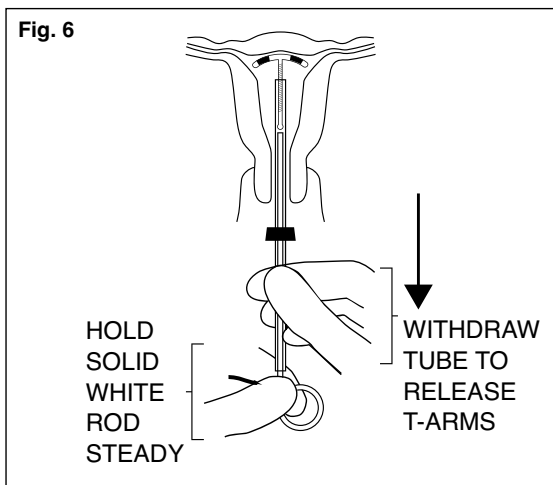
- Rotate the blue flange so that the horizontal arms of Paragard and the long axis of the blue flange lie in the same horizontal plane to ensure the arms open up in the proper direction.
- To orient the uterus in an axial position, apply gentle traction to the tenaculum. Then pass the loaded insertion tube through the cervical canal until Paragard just touches the fundus of the uterus. The blue flange should be at the cervix in the horizontal plane (see Figure 5).

Figure 5: Insertion Tube with Paragard in Uterus



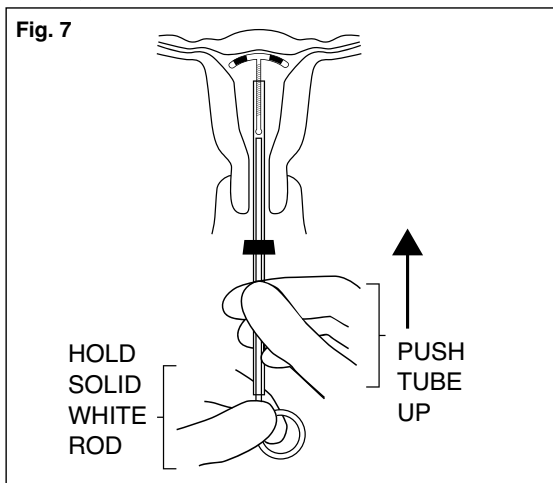
- Release the arms of Paragard by holding the solid white rod steady and withdrawing the insertion tube no more than one centimeter. This releases the arms of Paragard high in the uterine fundus (see Figure 6).

Figure 6: Release T-Arms of Paragard in Uterus



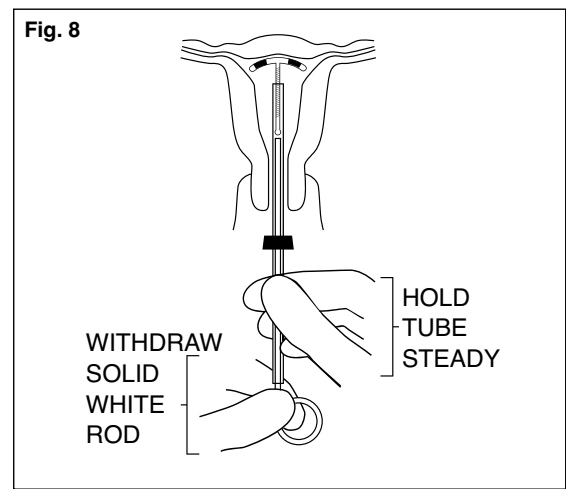
- Gently and carefully move the insertion tube upward toward the fundus of the uterus, until slight resistance is felt. This will ensure placement of Paragard at the highest possible position within the uterus (see Figure 7). Do not use the white rod as a plunger to push or insert Paragard.

Figure 7: Placement of Paragard in Fundus of Uterus



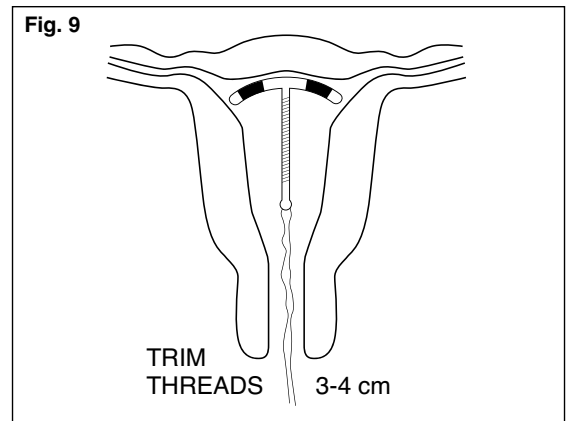
- Hold the insertion tube steady and withdraw the solid white rod (see Figure 8). Do not remove the solid white rod and the insertion tube at the same time to prevent accidental pulling of the threads.

Figure 8: Withdraw Solid White Rod from Uterus



- Gently and slowly withdraw the insertion tube from the cervical canal.
- Only the threads should be visible protruding from the cervix (see Figure 9). Trim the threads so that 3 to 4 cm protrude into the vagina. Measure the length of protrusion of the threads.
- Recommend recording length of threads, date of placement and Paragard lot number.

Figure 9: Appropriate Paragard Placement in Uterus



If you suspect that Paragard is not in the correct position, check placement (with ultrasound, if necessary). If Paragard is not positioned completely within the uterus, remove it and replace it with a new Paragard. Do not reinsert an expelled or partially expelled Paragard.

2.5 Postplacement Management of Paragard

Following placement:

- Examine the female after her first menses to confirm that Paragard is still in place. You should be able to visualize or feel only the threads. The length of the visible threads may change with time. However, no action is needed unless you suspect partial expulsion, perforation, pregnancy, or breakage.
- If you cannot find the threads in the vagina, check that Paragard is still in the uterus. The threads can retract into the uterus or break, or Paragard can break, perforate the uterus, or be expelled. Gentle probing of the cavity, x-ray, or sonography may be required to locate Paragard.
- Remove Paragard if it has been partially expelled or perforated the uterus [see *Warnings and Precautions* (5.6, 5.7)].

Do not reinsert a used Paragard.

2.6 Removal of Paragard

Timing of Removal

- Paragard can be removed at any time prior to 10 years after insertion.
- Remove Paragard no later than 10 years after insertion. A new Paragard can be inserted at the time of removal if continued contraceptive protection is desired.

Removal Instructions

- Use a speculum and visualize the cervix.
- Remove Paragard with forceps, pulling gently on the exposed threads. The arms of Paragard will fold upwards as it is withdrawn from the uterus.
- Breakage or embedment of Paragard in the myometrium can make removal difficult [see *Warnings and Precautions*, (5.5)]. Analgesia, paracervical anesthesia, cervical dilation, alligator forceps or other grasping instrument, or hysteroscopy may assist in removing an embedded Paragard.
- Make sure Paragard is intact upon removal.
- Removal may be associated with some pain and/or bleeding or vasovagal reactions (e.g. syncope, bradycardia, seizures) especially in patients with a predisposition to these conditions.

3 DOSAGE FORMS AND STRENGTHS

Paragard is a T-frame copper-containing intrauterine system (IUS) consisting of a polyethylene frame with barium sulfate measuring 32 mm horizontally and 36 mm vertically, with approximately 176 mg of copper wire wrapped around the vertical arm and an approximately 68.7 mg copper wire collar placed on each side of the horizontal arm with a total exposed copper surface area is $380 \pm 23 \text{ mm}^2$, packaged with an insertion tube with blue flange and solid white rod. A monofilament polyethylene thread is tied through the tip of the vertical arm resulting in two white threads, each at least 10.5 cm in length. Figure 1 displays the contents of the package [see *Dosage and Administration* (2.3)].

4 CONTRAINDICATIONS

The use of Paragard is contraindicated when one or more of the following conditions exist:

- Pregnancy or suspicion of pregnancy [see *Warnings and Precautions* (5.1, 5.2) and *Use in Specific Populations* (8.1)]
- Abnormalities of the uterus resulting in distortion of the uterine cavity
- Acute pelvic inflammatory disease (PID) [see *Warnings and Precautions* (5.4)]
- Postpartum endometritis or postabortal endometritis in the past 3 months [see *Warnings and Precautions* (5.4)]
- Known or suspected uterine or cervical malignancy
- Uterine bleeding of unknown etiology
- Untreated acute cervicitis or vaginitis or other lower genital tract infection
- Conditions associated with increased susceptibility to pelvic infections [see *Warnings and Precautions* (5.4)]
- Wilson's disease [see *Warnings and Precautions* (5.9)]
- A previously placed IUD or IUS that has not been removed
- Hypersensitivity to any component of Paragard including to copper or any of the trace elements present in the copper component of Paragard [see *Adverse Reactions* (6.2) and *Description* (11)]

5 WARNINGS AND PRECAUTIONS

5.1 Ectopic Pregnancy

Evaluate for possible ectopic pregnancy in any female who becomes pregnant while using Paragard because a pregnancy that occurs with Paragard in place is more likely to be ectopic than a pregnancy in the general population. However, because Paragard prevents most pregnancies, females who use Paragard have a lower risk of an ectopic pregnancy than sexually active females who do not use any contraception.

The incidence of ectopic pregnancy in the clinical trials with Paragard (which excluded females with a previous history of ectopic pregnancy) was approximately 0.06%. Ectopic pregnancy may require surgery and may result in loss of fertility.

5.2 Risks with Intrauterine Pregnancy

If intrauterine pregnancy occurs with Paragard in place and the strings are visible or can be retrieved from the cervical canal, remove Paragard because leaving it in place may increase the risk of spontaneous abortion and preterm labor. Removal of Paragard may also result in spontaneous abortion. In the event of an intrauterine pregnancy with Paragard, consider the following:

Septic Abortion

In females becoming pregnant with an intrauterine system (IUS), including Paragard in place, septic abortion, with septicemia, septic shock, and death, may occur [see *Warnings and Precautions* (5.3)]. Septic abortion typically requires hospitalization and treatment with intravenous antibiotics. Septic abortion may result in spontaneous abortion or a medical indication for pregnancy termination. A hysterectomy may be required if severe infection of the uterus occurs, which will result in permanent infertility.

Continuation of Pregnancy

If a female becomes pregnant with Paragard in place and if Paragard cannot be removed or the female chooses not to have it removed, warn her that failure to remove Paragard increases the risk of miscarriage, sepsis, premature labor, and premature delivery. Prenatal care should include counseling about these risks and that she should report immediately any flu-like symptoms, fever, chills, cramping, pain, bleeding, vaginal discharge or leakage of fluid, or any other symptom that suggests complications of the pregnancy.

5.3 Sepsis

Severe infection or sepsis, including Group A Streptococcal Sepsis (GAS), have been reported following insertion of IUSs, including Paragard. In some cases, severe pain occurred within hours of insertion followed by sepsis within days. Because death from GAS is more likely if treatment is delayed, it is important to be aware of these rare but serious infections. Aseptic technique during insertion of Paragard is essential in order to minimize serious infections such as GAS [see *Dosage and Administration* (2.3)].

5.4 Pelvic Inflammatory Disease and Endometritis

Insertion of Paragard is contraindicated in the presence of known or suspected Pelvic Inflammatory Disease (PID) or endometritis [see *Contraindications* (4)]. IUSs, including Paragard, have been associated with an increased risk of PID, most likely due to organisms being introduced into the uterus during insertion. In the clinical trials with Paragard, the incidence of PID that resulted in the removal of Paragard was approximately 0.1% [see *Clinical Studies* (14)].

Counsel women who receive Paragard to notify a healthcare provider if they have complaints of lower abdominal or pelvic pain, odorless discharge, unexplained bleeding, fever, or genital lesions or sores. In such circumstances, perform a pelvic examination promptly to evaluate for possible pelvic infection. Remove Paragard in cases of recurrent PID or endometritis, or if an acute pelvic infection is severe or does not respond to treatment.

PID can have serious consequences, such as tubal damage (leading to ectopic pregnancy or infertility), hysterectomy, sepsis, and death.

Females at Increased Risk for PID

PID or endometritis are often associated with a sexually transmitted infection (STI) and Paragard does not protect against STIs. The risk of PID or endometritis is greater for females who have multiple sexual partners, and also for females whose sexual partner(s) have multiple sexual partners. Females who have had PID or endometritis are at increased risk for a recurrence or re-infection. In particular, ascertain whether a female is at increased risk of infection (for example, leukemia, acquired immune deficiency syndrome (AIDS), intravenous drug abuse).

Asymptomatic PID

PID or endometritis may be asymptomatic but still result in tubal damage and its sequelae.

Treatment of PID or Endometritis in Patients Using Paragard

Remove Paragard in cases of recurrent endometritis or PID, or if an acute pelvic infection is severe or does not respond to treatment. Prophylactic antibiotics administered at the time of insertion do not appear to lower the incidence of PID.

Promptly assess and treat any female who develops signs or symptoms of PID. Perform appropriate testing for sexually transmitted infection and initiate antibiotic therapy promptly. Paragard does not need to be removed immediately. Reassess the patient in 48-72 hours. If no clinical improvement occurs, continue antibiotics and consider removal of Paragard. If the decision is to remove Paragard, start antibiotics prior to removal to avoid the potential risk for bacterial spread resulting from the removal procedure.

Actinomycosis

Actinomycosis has been associated with IUS use, including Paragard. Symptomatic women with known actinomycosis infection should have Paragard removed and receive antibiotics. Actinomycetes can be found in the genital tract cultures in healthy women without IUSs. The significance of actinomyces-like organisms on a Papanicolaou (PAP) smear in an asymptomatic IUS user is unknown, and this finding alone does not always require IUS removal and treatment. When possible, confirm a PAP smear diagnosis with cultures.

5.5 Embedment

Partial penetration or embedment of Paragard in the myometrium can make removal difficult. In some cases, surgical removal may be necessary. Breakage of an embedded Paragard during non-surgical removal has been reported [see *Dosage and Administration* (2.6)].

5.6 Perforation

Partial or total perforation of the uterine wall or cervix may occur during insertions, although the perforation may not be detected until sometime later. Perforation may reduce contraceptive efficacy and result in pregnancy. The incidence of perforation during or following Paragard insertion in clinical trials was 0.2% (13 out of 5344).

Delayed detection or removal of Paragard in cases of perforation may result in migration outside the uterine cavity, adhesions, peritonitis, intestinal penetration, intestinal obstruction, abscesses and/or damage to adjacent organs.

A postmarketing safety study conducted in Europe (EURAS IUD) with IUSs, including copper IUSs, demonstrated an increased risk of perforation in lactating women. The risk of perforation may be increased if an IUS, such as Paragard, is inserted when the uterus is fixed, retroverted or not completely involuted during the postpartum period.

If perforation does occur, locate and remove Paragard promptly. Surgery may be required. Preoperative imaging followed by laparoscopy or laparotomy is often required to remove Paragard from the peritoneal cavity.

5.7 Expulsion

Partial or complete expulsion of Paragard has been reported, resulting in the loss of contraceptive protection. The incidence of expulsion in the clinical trials with Paragard was approximately 2.3%. Consider further diagnostic imaging, such as x-ray, to confirm expulsion if the IUS is not found in the uterus.

Paragard has been placed immediately after delivery, although the risk of expulsion may be increased when the uterus is not completely involuted at the time of insertion. Remove a partially expelled Paragard.

5.8 Wilson's Disease

Paragard may exacerbate Wilson's disease, a rare genetic disease affecting copper excretion; therefore, the use of Paragard is contraindicated in females of reproductive potential with Wilson's disease [see *Contraindications* (4)].

5.9 Bleeding Pattern Alterations

Paragard can alter the bleeding pattern and result in heavier and longer menstrual cycles with intermenstrual spotting.

In two clinical trials with Paragard® [see *Adverse Reactions* (6.1)], there were reports of oligomenorrhea and amenorrhea; however, a causal relationship between Paragard and these events could not be established. Menstrual changes were the most common medical reason for discontinuation of Paragard. Discontinuation rates for pain and bleeding combined were highest in the first year of use and diminished thereafter. The percentage of females who discontinued Paragard because of bleeding problems or pain during these studies ranged from 12% in the first year to 2% in Year 9. Females complaining of heavy vaginal bleeding should be evaluated and treated, and may need to discontinue Paragard [see *Adverse Reactions* (6.1)].

5.10 Magnetic Resonance Imaging (MRI) Safety Information

Non-clinical testing has demonstrated that Paragard is MR Conditional. A patient with Paragard can be safely scanned in an MR system meeting the following conditions:

- Static magnetic field of 3.0 T or 1.5 T
- Maximum spatial field gradient of 4,000 gauss/cm (40 T/m)
- Maximum MR system reported, whole body averaged specific absorption rate (SAR) of 2 W/kg (Normal Operating Mode)



Under the scan conditions defined above, Paragard is expected to produce a maximum temperature rise of less than 0.5° C after 15 minutes of continuous scanning.

In non-clinical testing, the image artifact caused by the system extended less than 5 mm from the implant when imaged with a gradient echo pulse sequence and a 3.0 T MRI system.

5.11 Medical Diathermy

Medical equipment that contain high level of Radiofrequency (RF) energy such as diathermy may cause health effects (by heating tissue) in females with a metal-containing IUD including Paragard. Avoid using high medical RF transmitter devices in females with Paragard.

6 ADVERSE REACTIONS

The following serious adverse reactions are discussed elsewhere in the labeling:

- Ectopic pregnancy [see *Warnings and Precautions* (5.1)]
- Intrauterine pregnancy [see *Warnings and Precautions* (5.2)]
- Septic abortion [see *Warnings and Precautions* (5.2)]
- Group A Streptococcal Sepsis (GAS) [see *Warnings and Precautions* (5.3)]
- Pelvic Inflammatory Disease and Endometritis [see *Warnings and Precautions* (5.4)]
- Embedment [see *Warnings and Precautions* (5.5)]
- Perforation [see *Warnings and Precautions* (5.6)]
- Expulsion [see *Warnings and Precautions* (5.7)]
- Bleeding Pattern Alterations [see *Warnings and Precautions* (5.9)]

6.1 Clinical Trials Experience

Because clinical trials are conducted under widely varying conditions, adverse reaction rates observed in the clinical trials of a drug cannot be directly compared to rates in the clinical trials of another drug and may not reflect the rates observed in clinical practice.

The data described below reflect exposure in two trials [see *Clinical Studies* (14)].

- The WHO Study 79914 was a randomized, multicenter, multinational study of copper T IUSs, including Paragard in 1,396 women outside the US. In the WHO Study, 100% were parous and the mean age at enrollment was 29 years old.
- The US Composite Study was a meta-analysis that evaluated randomized, double-blind, comparative studies of copper T IUSs, including Paragard in 3,536 women in the US. In the US Composite Study, 64% were nulliparous, 49% were nulligravida, 68% were under age 25 at the time of enrollment (median age 23 years old).

Table 2 shows discontinuation rates from the two clinical studies by adverse reaction and year.

Table 2: Summary of Rates* (No. per 100 Subjects) by Year for Adverse Reactions Causing Discontinuation

	Year									
	1	2	3	4	5	6	7	8	9	10
Number of Women at Start of Year	4,932	3,149	2,018	1,121	872	621	563	483	423	325
Expulsion	5.7	2.5	1.6	1.2	0.3	0.0	0.6	1.7	0.2	0.4
Bleeding/Pain	11.9	9.8	7.0	3.5	3.7	2.7	3.0	2.5	2.2	3.7
Other Medical Event	2.5	2.1	1.6	1.7	0.1	0.3	1.0	0.4	0.7	0.3

*Rates were calculated by weighting the annual rates by the number of subjects starting each year for each of the US Composite Study (3536 subjects) and the World Health Organization (1396 subjects) trials.

The following adverse reactions have also been observed: anemia, backache, dysmenorrhea, dyspareunia, complete or partial expulsion, prolonged menstrual flow, menstrual spotting, pain and cramping, and vaginitis.

6.2 Postmarketing Experience

The following adverse reactions have been identified during post-approval use of Paragard. Because these reactions are reported voluntarily from a population of uncertain size, it is not always possible to reliably estimate their frequency or establish a causal relationship to drug exposure.

- Gastrointestinal Disorders:* abdominal distension, nausea
- General Disorders and Administration Site Conditions:* device breakage, pyrexia
- Immune System Disorders:* allergy to metals, hypersensitivity
- Infections and Infestations:* endometritis/uterine infection
- Musculoskeletal and Connective Tissue Disorders:* muscle spasms
- Nervous System Disorders:* dizziness
- Reproductive System and Breast Disorders:* amenorrhea
- Skin and Subcutaneous Tissue Disorders:* Stevens-Johnson syndrome

7 DRUG INTERACTIONS

No drug-drug interaction or drug-herbal supplement interaction studies have been conducted with Paragard.

8 USE IN SPECIFIC POPULATIONS

8.1 Pregnancy

Risk Summary

Use of Paragard is contraindicated for use in pregnant females because there is no need for pregnancy prevention in a female who is already pregnant and Paragard may cause adverse pregnancy outcomes. If a female becomes pregnant with Paragard in place, there is an increased risk of miscarriage, sepsis, premature labor, and premature delivery [see

Contraindications (4) and *Warnings and Precautions* (5.1, 5.2)]. Advise the female of the potential risks if pregnancy occurs with Paragard in place.

Published studies on pregnancy outcomes exposed to copper IUSs report up to 27% miscarriage when the IUS was removed compared to 77% miscarriage when the IUS remained in the uterus. Studies on Paragard and birth defects have not been conducted.

8.2 Lactation

Risk Summary

No difference has been detected in concentration of copper in human milk before and after insertion of copper IUSs, including Paragard. There is no information on the effect of copper in a breastfed child or the effect on milk production. The developmental and health benefits of breastfeeding should be considered along with the mother's clinical need for Paragard and any potential adverse effects on the breastfed child from Paragard.

8.4 Pediatric Use

The safety and effectiveness of Paragard have been established in females of reproductive potential. Efficacy is expected to be the same for postmenarcheal females regardless of age.

Paragard is not indicated in females before menarche.

8.5 Geriatric Use

Paragard has not been studied in women over 65 years of age and is not indicated in this population.

11 DESCRIPTION

Paragard (intrauterine copper contraceptive) is a T-shaped intrauterine system (IUS), measuring 32 mm horizontally and 36 mm vertically, with a 3 mm diameter bulb at the tip of the vertical stem. (See Figure 1) [see *Dosage and Administration* (2.3)]. A monofilament polyethylene thread is tied through the tip, resulting in two white threads, each at least 10.5 cm in length, to aid in detection and removal of the intrauterine system. The T-frame is made of polyethylene with barium sulfate to aid in detecting the intrauterine system under x-ray. Paragard also contains copper (approximately 176 mg of wire wrapped around the vertical stem and an approximately 68.7 mg collar placed on each side of the horizontal arm). The total exposed copper surface area is 380 ± 23 mm². One Paragard weighs less than one (1) gram. Paragard and its components are not made with natural rubber latex.

Paragard is packaged together with an insertion tube and solid white rod in a Tyvek® polyethylene pouch that is then sterilized. A moveable blue flange on the insertion tube aids in gauging the depth of insertion through the cervical canal and into the uterine cavity (See Figure 1) [see *Dosage and Administration* (2.3)].

12 CLINICAL PHARMACOLOGY

12.1 Mechanism of Action

Copper continuously released into the uterine cavity contributes to the contraceptive effectiveness of Paragard. Mechanism(s) by which copper enhances contraceptive efficacy include interference with sperm transport and fertilization of an egg, and possibly prevention of implantation.

13 NONCLINICAL TOXICOLOGY

13.1 Carcinogenicity, Mutagenicity, Impairment of Fertility

Adequate long-term studies in animals to assess the carcinogenic potential of a copper-containing IUS have not been performed.

The genotoxic potential of a copper-containing IUS has not been evaluated.

14 CLINICAL STUDIES

The efficacy of Paragard for use in females of reproductive potential for prevention of pregnancy for up to 10 years was demonstrated in two trials:

- WHO Study 79914 was a randomized, multicenter, multinational study of copper T IUSs, including Paragard in 1,396 women outside the U.S. In the WHO study, 100% were parous and the mean age at enrollment was 29 years old.
- The U.S. Composite Study was a meta-analysis that evaluated several randomized, double-blind, comparative studies of copper T IUSs, including Paragard in 3,536 women in the US. In the US study, 64% were nulliparous, 49% were nulligravida; 68% were under age 25 at the time of enrollment (median age 23 years old).

The pregnancy rate in the two clinical studies with Paragard was less than 1 pregnancy per 100 women each year (see Table 3).

Table 3: Pregnancy Rates* (Number of Pregnancies per 100 Women) by Year in the WHO and U.S. Studies

	Year									
	1	2	3	4	5	6	7	8	9	10
Pregnancy	0.7	0.3	0.6	0.2	0.3	0.2	0.0	0.4	0.0	0.0
Number of Women at Start of Year	4,932	3,149	2,018	1,121	872	621	563	483	423	325

*Rates were calculated by weighting the annual rates by the number of subjects starting each year for each of the US Composite Study (3536 subjects) and the World Health Organization (1396 subjects) trials.

16 HOW SUPPLIED/STORAGE AND HANDLING

Paragard (intrauterine copper contraceptive) is available in cartons of 1 (one) sterile unit (NDC 59365-5128-1).

Each Paragard is white, T-shaped, and measures 32 mm horizontally and 36 mm vertically, with approximately 176 mg of copper wire wrapped around the vertical arm and an approximately 68.7 mg copper wire collar placed on each side of the horizontal arms,

and with a monofilament polyethylene thread tied through the tip of the vertical arm [see *Dosage and Administration* (2.3)]. The T-frame is made of polyethylene with barium sulfate. Each Paragard is packaged together with an insertion tube with blue flange and solid white rod in a Tyvek® polyethylene pouch.

Store at controlled room temperature: 59° to 86°F (15° to 30°C).

17 PATIENT COUNSELING INFORMATION

Advise the patient to read the FDA-approved patient labeling (Patient Information).

Before inserting Paragard, counsel patients on the following:

Sexually Transmitted Infections: Advise patients that Paragard does not protect against HIV infection and other sexually transmitted diseases.

Ectopic Pregnancy: Advise patients to report pregnancies and be evaluated immediately, as a pregnancy with Paragard in place is more likely to be an ectopic pregnancy, and the risks of ectopic pregnancy include the loss of fertility [see *Warnings and Precautions* (5.1)].

Intrauterine Pregnancy: Advise patients to report pregnancies and be evaluated immediately, as an intrauterine pregnancy with Paragard in place, may result in septic abortion, with septicemia, septic shock, and possible death. Septic abortion typically requires hospitalization and treatment with intravenous antibiotics. Septic abortion may result in spontaneous abortion or a medical indication for pregnancy termination. A hysterectomy may be required if severe infection of the uterus occurs, which will result in permanent infertility. If Paragard remains in the uterus during a pregnancy, there is an increased risk of miscarriage, sepsis, premature labor and premature delivery. Advise patients that a pregnancy must be followed closely and advise patients to report immediately any symptom, such as flu-like symptoms, fever, chills, cramping, pain, bleeding, vaginal discharge or leaking of fluid, or any other symptom that suggests complications of the pregnancy [see *Warnings and Precautions* (5.2)].

Sepsis: Advise patients that sepsis may occur after insertion of Paragard and to seek immediate treatment for fever and pelvic pain that occurs soon after insertion, as untreated sepsis can result in death [see *Warnings and Precautions* (5.3)].

Pelvic Inflammatory Disease: Advise patients that pelvic inflammatory disease (PID) may occur after insertion of Paragard and that PID can cause tubal damage leading to ectopic pregnancy or infertility, or can necessitate hysterectomy, or cause death. Advise patients to recognize and report promptly any symptoms of PID including development of menstrual disorders (prolonged or heavy bleeding), unusual vaginal discharge, abdominal or pelvic pain or tenderness, dyspareunia, chills, and fever [see *Warnings and Precautions* (5.4)].

Embedment, Perforation, and Expulsion: Advise patients regarding the risks of embedment, perforation, and expulsion and inform patients that in some cases, removal of Paragard may be difficult and surgical removal may be necessary. Inform patients that perforation can cause infection, scarring, damage to other organs, pain, or infertility. Inform patients that excessive pain or vaginal bleeding during IUS placement, worsening pain or bleeding after placement, or the inability to feel the IUS strings may occur with IUS perforation and expulsion. There is no protection from pregnancy if Paragard is displaced or expelled. [see *Warnings and Precautions* (5.5, 5.6, 5.7).]

Bleeding Pattern Alterations: Advise patients that heavier or longer periods and spotting between periods may occur. Instruct patients to report continued or severe symptoms to their healthcare provider [see *Warnings and Precautions* (5.9)].

Checking for Paragard: Advise patients to check that Paragard is still in the uterus by reaching up to the top of the vagina with clean fingers to feel the two threads. Inform patients not to pull on the threads, which could displace Paragard. Advise patients to promptly report if there are changes in the length of the two threads, if they cannot locate the threads, or they can feel any other part of Paragard besides the threads.

Magnetic Resonance Imaging (MRI) Safety Information: Inform patients that Paragard can be safely scanned with MRI only under specific conditions. Instruct patients who will have an MRI to tell their healthcare provider that they have Paragard [see *Warnings and Precautions* (5.10)].

Medical Diathermy: Instruct patients to tell their healthcare provider that they have Paragard prior to undergoing medical diathermy [see *Warnings and Precautions* (5.11)].

Other Important Information:

- Advise patients to contact their healthcare provider if any of the following occur:
 - Pelvic pain or pain during sex
 - Unusual vaginal discharge or genital sores
 - Possible exposure to STIs
 - HIV positive seroconversion in herself or her partner
 - Severe or prolonged vaginal bleeding
 - Missed period
- Advise patients that they may use tampons or pads while wearing Paragard.

CooperSurgical

Manufactured by:
CooperSurgical, Inc.
Trumbull, CT 06611

PATIENT INFORMATION

Paragard® ('par-uh-gahrd)
(intrauterine copper contraceptive)

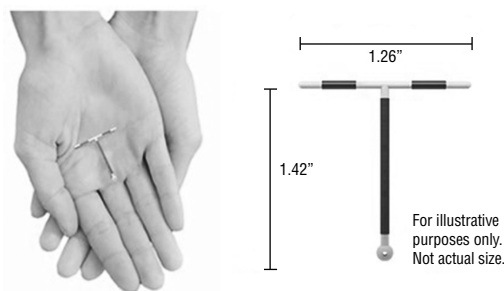
Paragard® does not protect against HIV infection (AIDS) or other sexually transmitted infections (STIs).

Read this Patient Information carefully before you decide if Paragard is right for you. This information does not take the place of talking with your gynecologist or other healthcare provider who specializes in women's health. If you have any questions about Paragard, ask your healthcare provider. You should also learn about other birth control methods to choose the one that is best for you.

What is Paragard?

- Paragard is a copper-releasing system that is placed in your uterus by your healthcare provider to prevent pregnancy for up to 10 years.
- Paragard can be removed by your healthcare provider at any time.
- Paragard does not contain any hormones.
- Paragard can be used whether or not you have given birth to a child.

Paragard is a small, flexible plastic "T" shaped intrauterine system with copper wrapped around the stem and placed on arms of the "T". Two thin white threads are attached to the stem (lower end) of Paragard. The threads are the only part of Paragard you can feel when Paragard is in your uterus; however, unlike a tampon string, the threads do not extend outside of your body.



What if I need birth control for more than 10 years?

Paragard must be removed on or before 10 years from the date of insertion. Your healthcare provider can place a new Paragard during the same office visit if you choose to continue using Paragard.

What if I want to stop using Paragard?

Paragard is intended for use up to 10 years, but you can stop using Paragard at any time by asking your healthcare provider to remove it. You could become pregnant as soon as Paragard is removed; however, if you do not want to become pregnant you should use another method of birth control. Talk to your healthcare provider about the best birth control methods for you.

What if I change my mind about birth control and want to become pregnant in less than 10 years?

Your healthcare provider can remove Paragard at any time before the 10 years after placement. You may become pregnant as soon as Paragard is removed.

How does Paragard work?

Paragard works by preventing sperm from reaching the egg, preventing sperm from fertilizing the egg, or possibly preventing attachment (implantation) in the uterus. Paragard does not stop your ovaries from making an egg (ovulating) each month.

How well does Paragard work for contraception?

The following chart shows the chance of getting pregnant for women who use different methods of birth control. Each box on the chart contains a list of birth control methods that are similar in effectiveness. The most effective methods are at the top of the chart. The box on the bottom of the chart shows the chance of getting pregnant for women who do not use birth control and are trying to get pregnant.

Paragard, an intrauterine system (IUS), is in the box at the top of the chart.

Fewer pregnancies

Fewer than
1 pregnancy per
100 women in
one year

10-20 pregnancies
per 100 women in
one year

85 or more
pregnancies per 100
women in one year

- Implants
- Injections
- Intrauterine devices
- Sterilization

- Birth control pills
- Skin Patch
- Vaginal rings with hormones

- Condoms
- Diaphragm

- No sex during the most fertile days of the monthly cycle
- Spermicide
- Withdrawal

- No birth control

More pregnancies

Who might use Paragard?

You might choose Paragard if you:

- want long-term birth control that provides a low chance of getting pregnant (less than 1 in 100)
- want birth control that works continuously for up to 10 years
- want birth control that is reversible
- want a birth control method that you do not need to take daily
- are willing to use a birth control method that is inserted in the uterus
- want birth control that does not contain hormones

Do not use Paragard if you:

- are or might be pregnant
- have a condition of the uterus that changes the shape of the uterine cavity, such as large fibroid tumors
- have an untreated pelvic infection called pelvic inflammatory disease (PID) now
- have had an infection in your uterus after a pregnancy or abortion in the past 3 months
- can get infections easily. For example, if you:
 - have problems with your immune system
 - have multiple sexual partners or your partner has multiple sexual partners
 - use or abuse intravenous drugs
- have or suspect you might have cancer of the uterus or cervix
- have unexplained bleeding from your vagina
- have an untreated lower genital infection now in your cervix
- have Wilson's disease (a disorder in how the body handles copper)
- are allergic to copper, polyethylene, or barium sulfate
- have an intrauterine system in your uterus already

Before having Paragard placed, tell your healthcare provider if you have:

- any of the conditions listed above
- slow heart beat (bradycardia)
- dizziness (syncope)
- seizures
- recently had a baby or if you are breastfeeding
- AIDS, HIV, or any other sexually transmitted infection

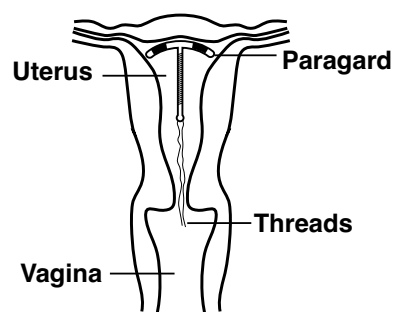
How is Paragard placed?

Paragard is placed in your uterus during an in-office visit.

First, your healthcare provider will examine your pelvis to find the exact position of your uterus. Your healthcare provider will then cleanse your vagina and cervix with an antiseptic solution and then, measure your uterus. Your healthcare provider will then slide a plastic tube containing Paragard into your uterus. The tube is removed, leaving Paragard inside your uterus. Two white threads will extend into your vagina. The threads are trimmed so they are just long enough for you to feel with your fingers when doing a self-check. As Paragard goes in, you may feel cramping or pinching. You may have some bleeding. Some women feel faint,

nauseated, or dizzy for a few minutes afterwards. Your healthcare provider may ask you to lie down until you are feeling better, and to get up slowly.

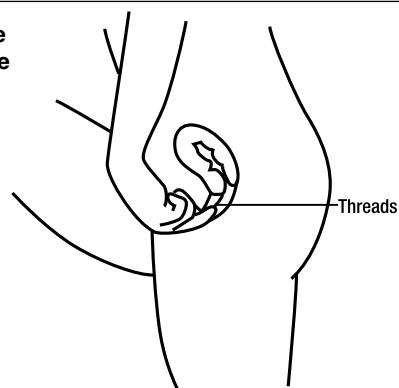
**Paragard
in place
inside
the uterus**



Should I check that Paragard is in place?

Yes, you should check that Paragard is in proper position by feeling the threads. It is a good habit to do this 1 time a month. Your healthcare provider should teach you how to check that Paragard is in place. First, wash your hands with soap and water. You can check by reaching up to the top of your vagina with clean fingers to feel the 2 threads. Do not pull on the threads.

**You should be
able to feel the
short threads
attached to
Paragard with
your finger**



If you feel changes in the length of the 2 threads, you cannot feel the threads, or you can feel any other part of Paragard other than the threads, Paragard may not be in the right position and may not prevent pregnancy. Use back-up birth control (such as condoms or spermicide) and ask your healthcare provider to check that Paragard is still in the right place.

If Paragard is accidentally removed, you may be at risk of pregnancy, and should talk to a healthcare provider.

How soon after placement of Paragard should I return to my healthcare provider?

Call your healthcare provider if you have any questions or concerns (see "When should I call my healthcare provider?"). Otherwise you should return to your healthcare provider for a follow-up visit after your first menses after Paragard is placed to make sure that Paragard is in the right position.

What if I become pregnant while using Paragard?

Call your healthcare provider right away if you think you may be pregnant. If you get pregnant while using Paragard, you may have an ectopic pregnancy. This means the pregnancy is not in your uterus. Unusual vaginal bleeding or abdominal pain especially with missed periods may be a sign of ectopic pregnancy.

Ectopic pregnancy is a medical emergency that often requires surgery. Ectopic pregnancy can cause internal bleeding, infertility and even death.

There are also risks if you get pregnant while using Paragard and the pregnancy is in the uterus. Severe infection, miscarriage, premature delivery, and even death can occur with pregnancies that continue with an intrauterine device (IUD). Because of this, your healthcare provider may try to remove Paragard, even though removing it may cause a miscarriage. If Paragard cannot be removed, talk with your healthcare provider about the benefits and risks of continuing the pregnancy.

If you continue your pregnancy see your healthcare provider regularly. Call your healthcare provider right away if you get flu-like symptoms, fever, chills, cramping, pain, bleeding, vaginal discharge, or fluid leaking from your vagina. These may be signs of infection.

It is not known if Paragard can cause long-term effects on the fetus if it stays in place during a pregnancy.

How will Paragard change my periods?

Your period may become heavier and longer. You may also have frequent spotting between periods.

Is it safe to breastfeed while using Paragard?

You may use Paragard when you are breastfeeding. The risk of Paragard becoming attached to (embedded) or going through the wall of the uterus is increased if Paragard is placed while you are breastfeeding.

Will Paragard interfere with sexual intercourse?

You and your partner should not feel Paragard during intercourse. Paragard is placed in the uterus, not in the vagina. Sometimes your partner may feel the threads. If this occurs, or if you or your partner experience pain during sex, talk with your healthcare provider.

Can I have an MRI with Paragard in place?

Paragard can be safely scanned with MRI only under specific conditions. Before you have an MRI, tell your healthcare provider that you have Paragard, an intrauterine device (IUD), in place.

Before you have a medical procedure using heat therapy tell your healthcare provider that you have Paragard in place.

What are the possible side effects of Paragard?

Paragard can cause serious side effects, including:

- **ectopic pregnancy and intrauterine pregnancy risks:** There are risks if you become pregnant while using Paragard (see “What if I become pregnant while using Paragard?”).
- **life-threatening infection:** Life-threatening infection can occur within the first few days after Paragard is placed. Call your healthcare provider immediately if you develop severe pain or fever shortly after Paragard is placed.
- **pelvic inflammatory disease (PID) or endometritis:** Some IUS users get a serious pelvic infection called pelvic inflammatory disease (PID) or endometritis. PID and endometritis are usually sexually transmitted. You have a higher chance of getting PID and endometritis if you or your partner has sex with other partners. PID and endometritis can cause serious problems such as infertility, ectopic pregnancy, and pelvic pain that does not go away. PID and endometritis are usually treated with antibiotics. More serious cases of PID or endometritis may require surgery. A hysterectomy (removal of the uterus) is sometimes needed. In rare cases, infections that start as PID can even cause death.

Tell your healthcare provider right away if you have any of these signs of PID or endometritis: low abdominal (stomach area) or pelvic pain, pelvic tenderness, painful sex, unusual or bad smelling vaginal discharge, chills, long-lasting or heavy bleeding, fever, genital lesions or sores.

- **embedding:** Paragard may become attached to (embedded) the wall of the uterus. This may make it hard to remove Paragard. Surgery may sometimes be needed to remove Paragard.
- **perforation:** Paragard may go through the wall of the uterus. This is called perforation. If this occurs, Paragard may no longer prevent pregnancy. If perforation occurs, Paragard may move outside the uterus and cause internal scarring, infection, damage to other organs, pain, or infertility and you may need surgery to have Paragard removed. Excessive pain or vaginal bleeding during placement of Paragard, pain or bleeding that gets worse after placement, or not being able to feel the threads may happen with perforation. You are not protected from pregnancy if Paragard moves outside the wall of the uterus. The risk of perforation is increased in breastfeeding women.
- **expulsion:** Paragard may partially or completely fall out of the uterus by itself. This is called expulsion. Expulsion occurs in about 2 out of 100 women. Excessive pain, vaginal bleeding during placement of Paragard, pain that gets worse, bleeding after placement, or not being

able to feel the threads may happen with expulsion. You are not protected from pregnancy if Paragard is expelled.

- **changes in bleeding:** You may have heavier and longer periods with spotting in between. Sometimes the bleeding is heavier than usual at first. Call your healthcare provider if the bleeding remains heavier or longer and spotting continues.
- **reactions after placement or removal:** Some women have had reactions such as dizziness (syncope), slowed heart rate (bradycardia), or seizures, immediately after Paragard was placed or removed. This happened especially in women who have had these conditions before.

Common side effects of Paragard include:

- anemia (low red blood cell count)
- pain during sex
- prolonged periods
- vaginal irritation
- backache
- expulsion (complete or partial)
- spotting
- painful periods
- vaginal discharge
- pain and cramping

This is not a complete list of possible side effects with Paragard. For more information, ask your healthcare provider. Tell your healthcare provider about any side effect that bothers you or does not go away.

Call your doctor for medical advice about side effects. You may report side effects to FDA at 1-800-FDA-1088.

After Paragard has been placed, when should I call my healthcare provider?

Call your healthcare provider if you have any concerns about Paragard. Be sure to call if you:

- think you are pregnant
- have pelvic pain or pain during sex
- have unusual vaginal discharge or genital sores
- have unexplained fever, flu-like symptoms or chills
- might be exposed to sexually transmitted infections (STIs)
- are concerned that Paragard may have been expelled (came out)
- cannot feel Paragard's threads or can feel the threads are much longer
- can feel any other part of the Paragard besides the threads
- become HIV positive or your partner becomes HIV positive
- have severe, bleeding that lasts a long time, or bleeding that concerns you
- miss a menstrual period

General information about the safe and effective use of Paragard.

Medicines are sometimes prescribed for purposes other than those listed in a Patient Information leaflet. You can ask your healthcare provider for information about Paragard that is written for health professionals.

Paragard and its components are not made with natural rubber latex.

Paragard® is a registered trademark of CooperSurgical, Inc. The other brands listed are trademarks of their respective owners.

CooperSurgical

Manufactured by:
CooperSurgical, Inc.
Trumbull, CT 06611

P/N 1017006

For more information, call CooperSurgical, Inc. at 1-877-727-2427.

This Patient Information has been approved by the U.S. Food and Drug Administration

Iss. 2/2020 ECR #2543

US-PAR-1900203(2)